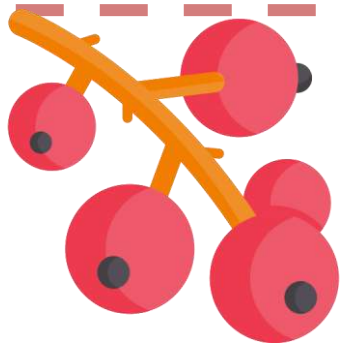


ANIMAL WORLD

ACTIVITIES AND GAMES

 @classandmom





THANK YOU!

ANIMAL WORLD

Hello!

Thanks for downloading this material! It is pdf pack to work on animals.

There are more than 20 pages of cards and games to practise and learn vocabulary:

- 1 - Who is who*
- 2 - Animal cards*
- 3 - Animal adjectives*
- 4 - Roulettes*
- 5 - Habitats*
- 6 - Roll and describe!*





www.classclassyesyes.com

WHO IS WHO ?

				
SQUIRREL	CRAB	SWAN	MONKEY	SNAKE
				
BEE	BUTTERFLY	LION	CROCODILE	TIGER
				
SWORDFISH	EAGLE	BEAR	DUCK	CHAMELEON
				
FROG	HEDGEHOG	STARFISH	WOLF	GIRAFFE
				
BABOON	SQUID	PANDA	FOX	SPIDER
				
SLOTH	COW	DEER	BUG	COCK

www.classclassyesyes.com

WHO IS WHO ?

IS IT...

vertebrate
amphibian
cnidarian
big /small
feathered
herbivore

invertebrate
bird
arthropod
long /short
colorful
carnivore

mammal
fish
mollusk
fast/slow
dangerous
omnivore

reptile

echinoderm
furry
noisy



HAS IT...

fur
feathers
x legs
wings
tail

scales
fins
lungs
gills
dry/moist skin

horns
beak
bones
spikes
antennae



CAN IT ...

fly
swim
run
slither
jump

hide
hunt
see very well
make honey
bite

camouflage
sing
hear





BEE

www.classclassyesyes.com



BEAR

www.classclassyesyes.com



FROG

www.classclassyesyes.com



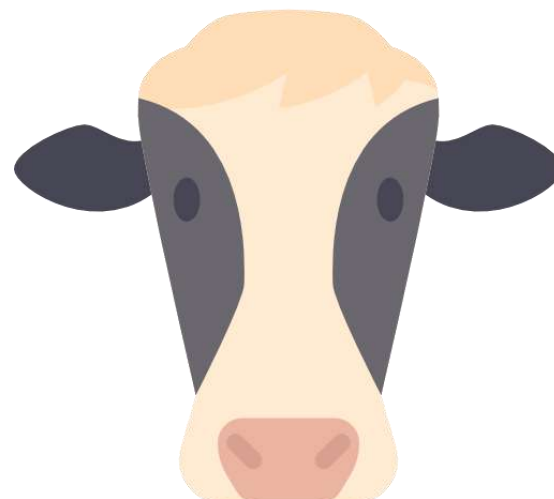
FOX

www.classclassyesyes.com



TIGER

www.classclassyesyes.com



COW

www.classclassyesyes.com



BEE

www.classclassyesyes.com



COCK

www.classclassyesyes.com



CHAMELEON

www.classclassyesyes.com



EAGLE

www.classclassyesyes.com



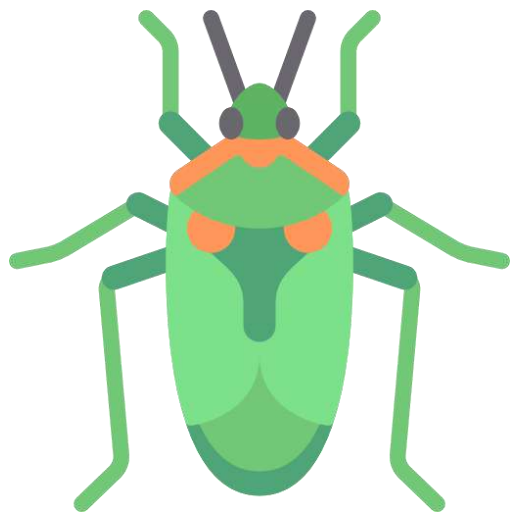
LION

www.classclassyesyes.com



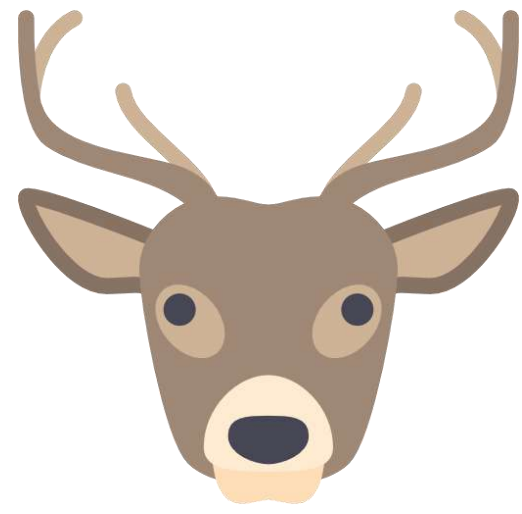
STARFISH

www.classclassyesyes.com



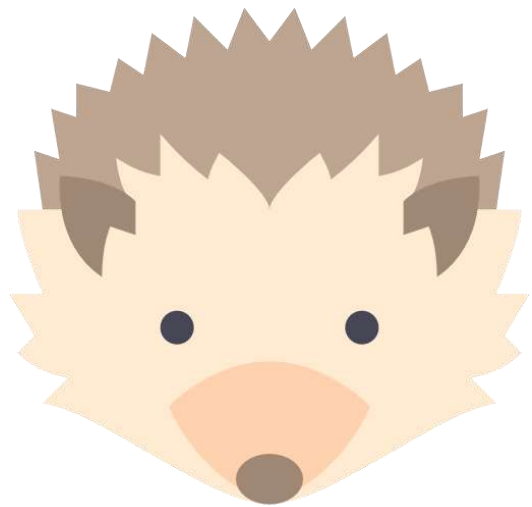
BUG

www.classclassyesyes.com



DEER

www.classclassyesyes.com



HEDGEHOG

www.classclassyesyes.com



BUTTERFLY

www.classclassyesyes.com



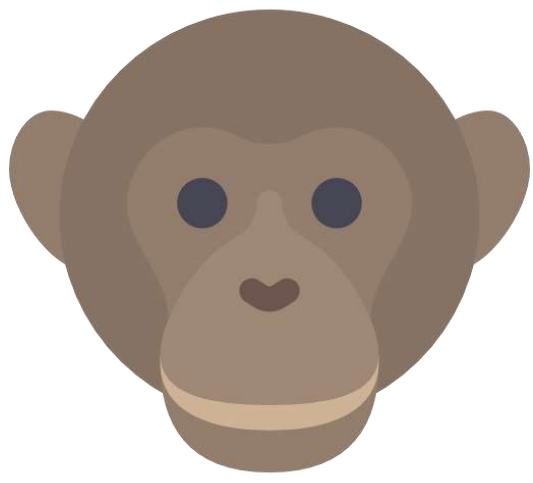
DUCK

www.classclassyesyes.com



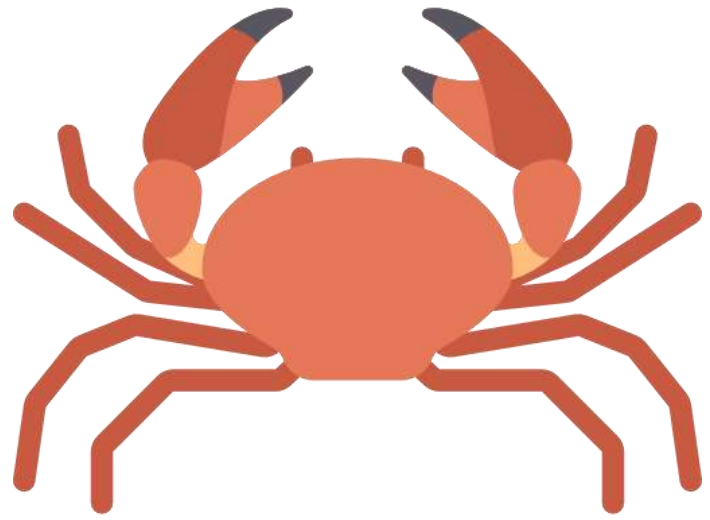
GIRAFFE

www.classclassyesyes.com



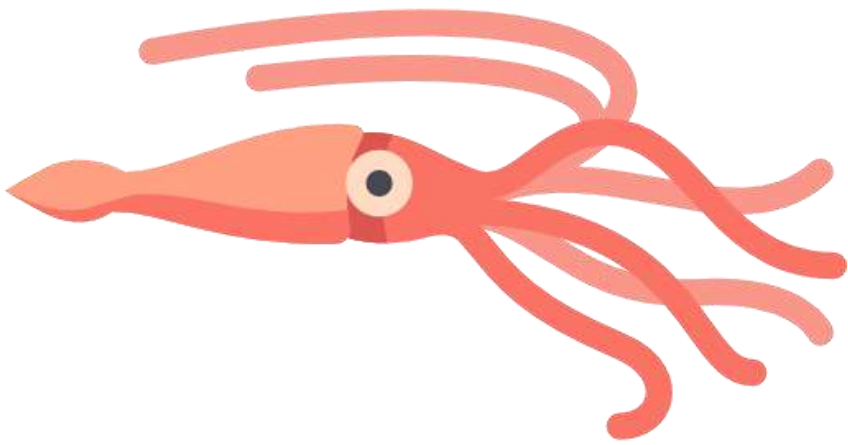
MONKEY

www.classclassyesyes.com



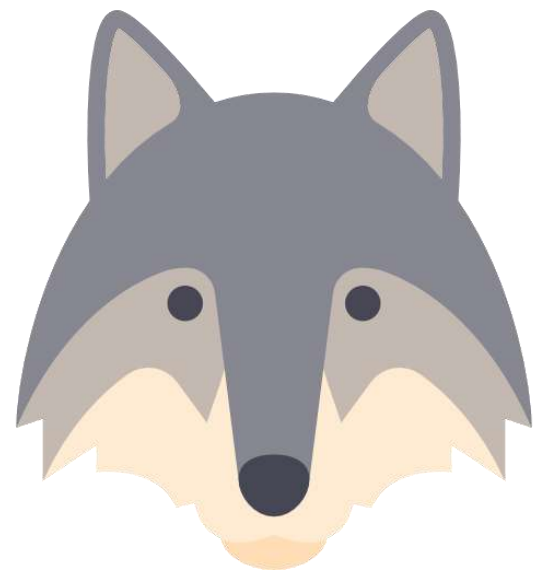
CRAB

www.classclassyesyes.com



SQUID

www.classclassyesyes.com



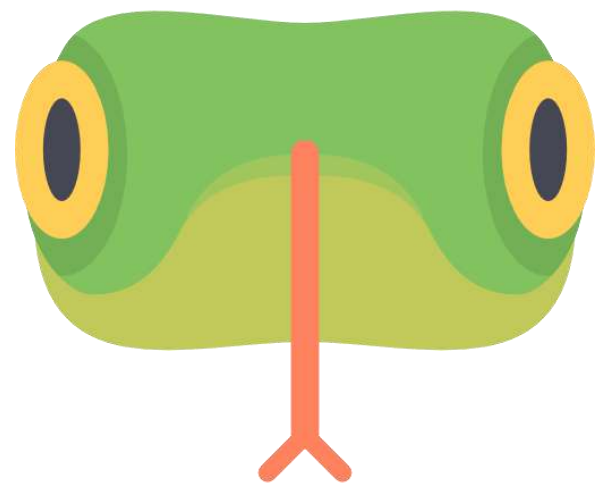
WOLF

www.classclassyesyes.com



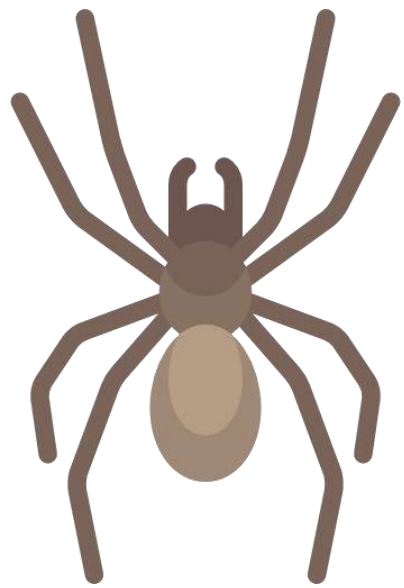
SQUIRREL

www.classclassyesyes.com



SNAKE

www.classclassyesyes.com



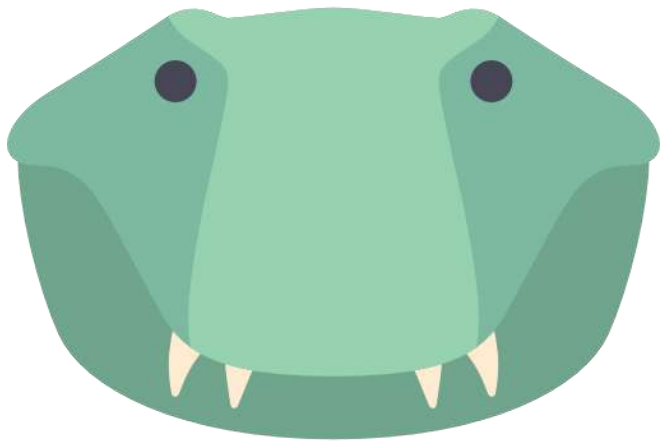
SPIDER

www.classclassyesyes.com



SWAN

www.classclassyesyes.com



CROCODILE

www.classclassyesyes.com



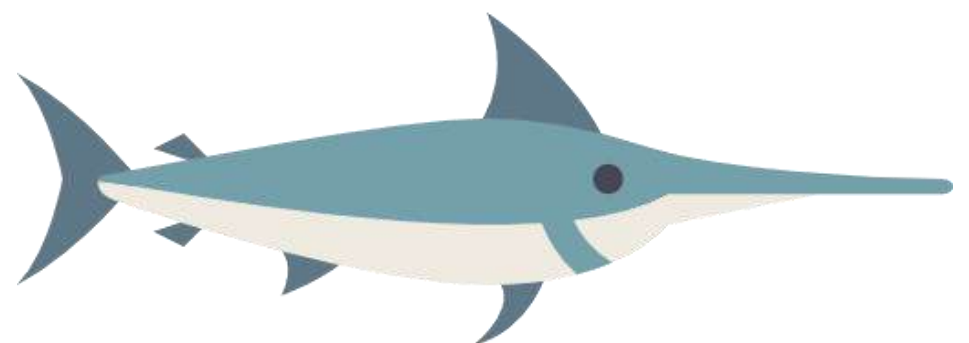
SLOTH

www.classclassyesyes.com



PANDA

www.classclassyesyes.com



SWORDFISH

www.classclassyesyes.com



BIG

OMNIVORE

FURRY

WILD

MAMMAL

VERTEBRATE

www.classclassyesyes.com



NOISY

WORKER

SMALL

INVERTEBRATE

www.classclassyesyes.com



FURRY

FAST

CARNIVORE

MAMMAL

LIVELY

www.classclassyesyes.com



MOIST

SMALL

OVIPARUS

VERTEBRATE

AMPHIBIAN

www.classclassyesyes.com



CARNIVORE

FURRY

FAST

MAMMAL

DANGEROUS

www.classclassyesyes.com



HERBIVORE

BIG

MAMMAL

HEAVY

NICE

www.classclassyesyes.com



FURRY

MAMMAL

FUNNY

LIVELY

VERTEBRATE

www.classclassyesyes.com



VERTEBRATE

NOISY

FEATHERED

SLOW

OVIPARUS

www.classclassyesyes.com



VERTEBRATE

SLOW

DRY

REPTILE

OVIPARUS

www.classclassyesyes.com



VERTEBRATE

FAST

CARNIVORE

FEATHERED

www.classclassyesyes.com



DANGEROUS

FAST

CARNIVORE

FURRY

VERTEBRATE

www.classclassyesyes.com



AQUATIC

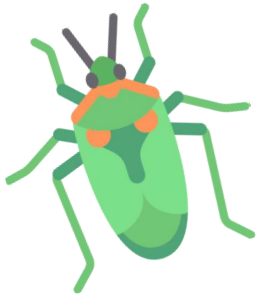
INVERTEBRATE

SLOW

SPIKY

LARGE

www.classclassyesyes.com



INVERTEBRATE

FAST

SMALL

INSECT

ARTHROPOD

www.classclassyesyes.com



FURRY

BIG

FAST

WILD

HORNED

MAMMAL

www.classclassyesyes.com



LITTLE

SPINY

OMNIVORE

MAMMAL

FAT

BROWN

www.classclassyesyes.com



BEAUTIFUL

SMALL

COLORFUL

ARTHROPOD

INVERTEBRATE

www.classclassyesyes.com



NOISY

VERTEBRATE

LIVELY

OVIPARUS

FEATHERED

www.classclassyesyes.com



TALL

STRONG

FAST

SMART

MAMMAL

BIG

www.classclassyesyes.com



WILD

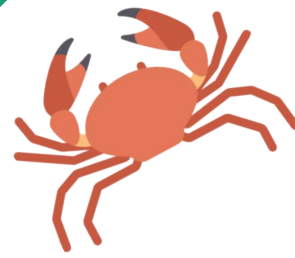
FUNNY

LIVELY

MAMMAL

VERTEBRATE

www.classclassyesyes.com



INVERTEBRATE

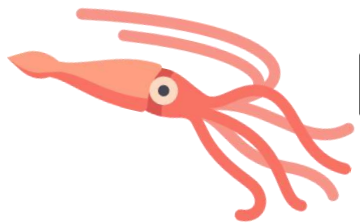
AQUATIC

SMALL

SYMMETRIC

HARD

www.classclassyesyes.com



INVERTEBRATE

AQUATIC

SMALL

SLIMY

www.classclassyesyes.com



CARNIVORE

FURRY

FAST

WILD

MAMMAL

www.classclassyesyes.com



LIVELY

FURRY

MAMMAL

FAST

OMNIVORE

www.classclassyesyes.com



REPTILE

DRY

POISONOUS

OVIPARUS

LONG

www.classclassyesyes.com



INVERTEBRATE

HAIRY

SMALL

ARTHROPODE

CREEPY

www.classclassyesyes.com



BEAUTIFUL

OVIPARUS

VERTEBRATE

FEATHERED

www.classclassyesyes.com



DANGEROUS

REPTILE

LONG

CARNIVORE

VERTEBRATE

www.classclassyesyes.com



FURRY

MAMMAL

SLOW

FUNNY

VERTEBRATE

www.classclassyesyes.com



BIG

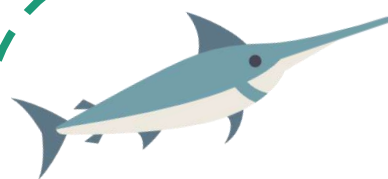
HEAVY

FURRY

VERTEBRATE

MAMMAL

www.classclassyesyes.com



LONG

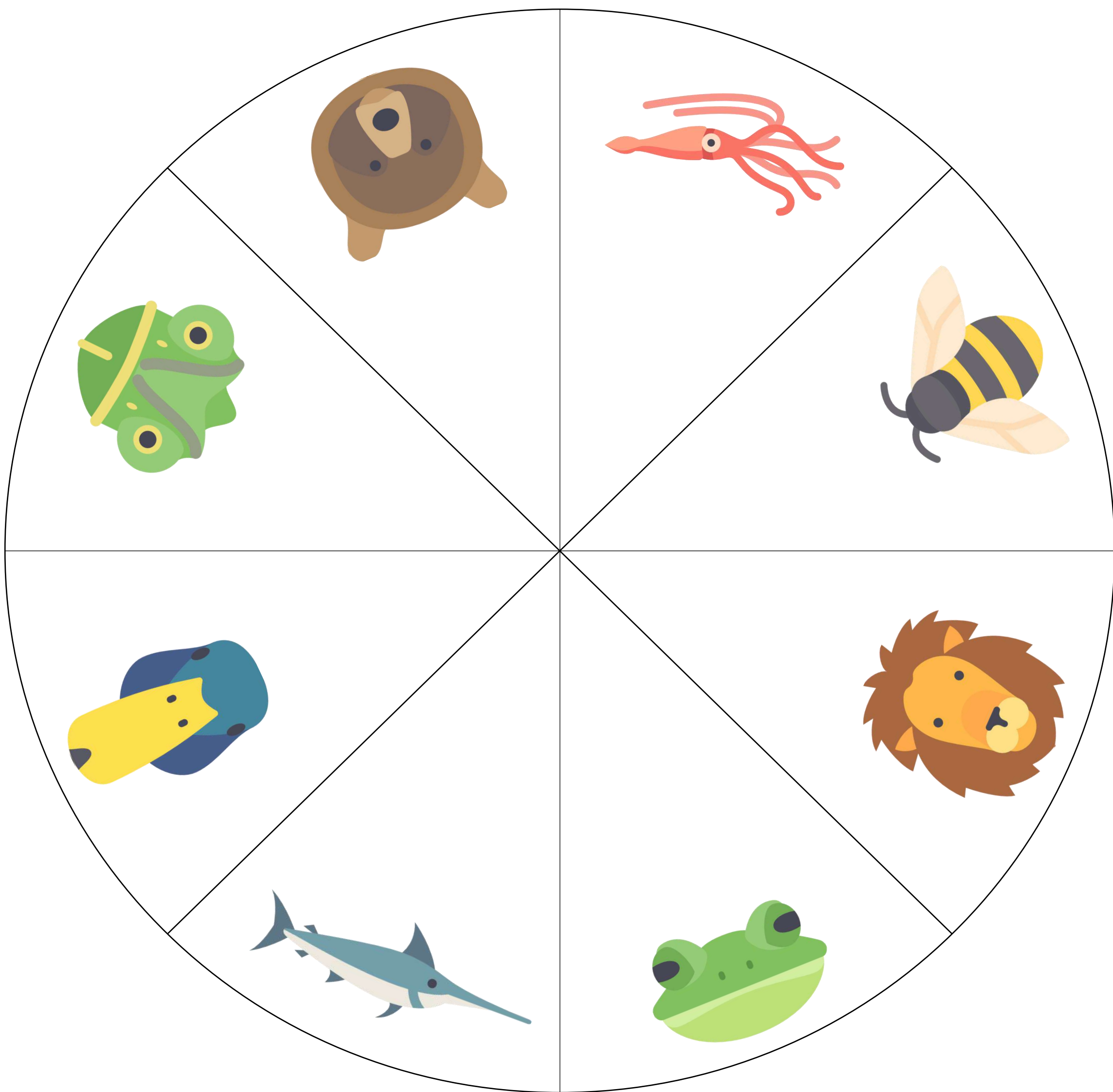
AQUATIC

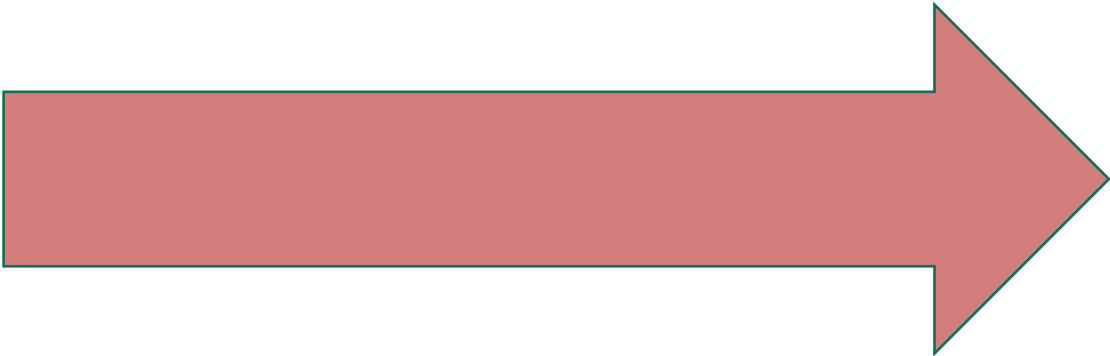
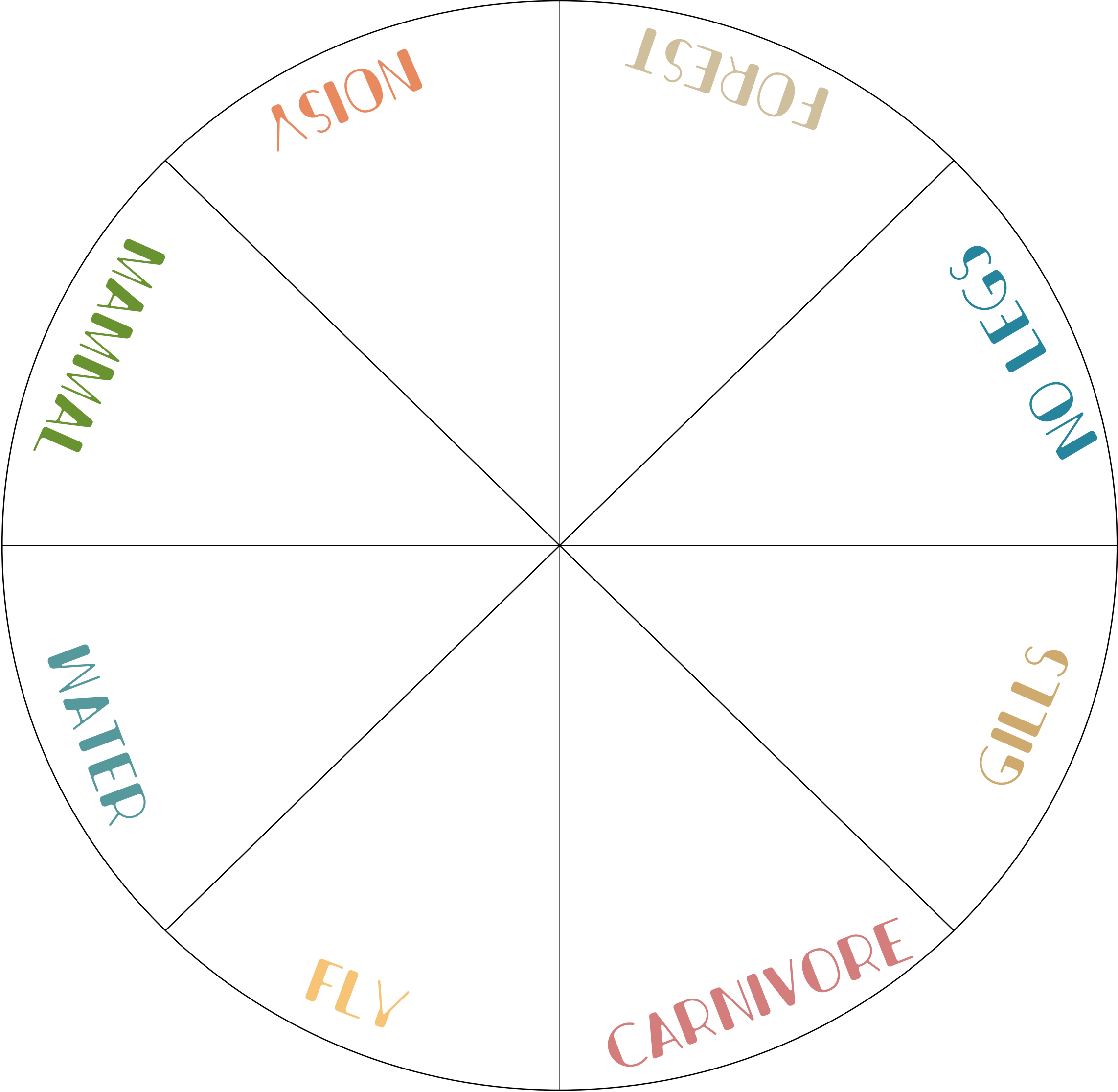
VERTEBRATE

OVIPARUS

FAST

www.classclassyesyes.com







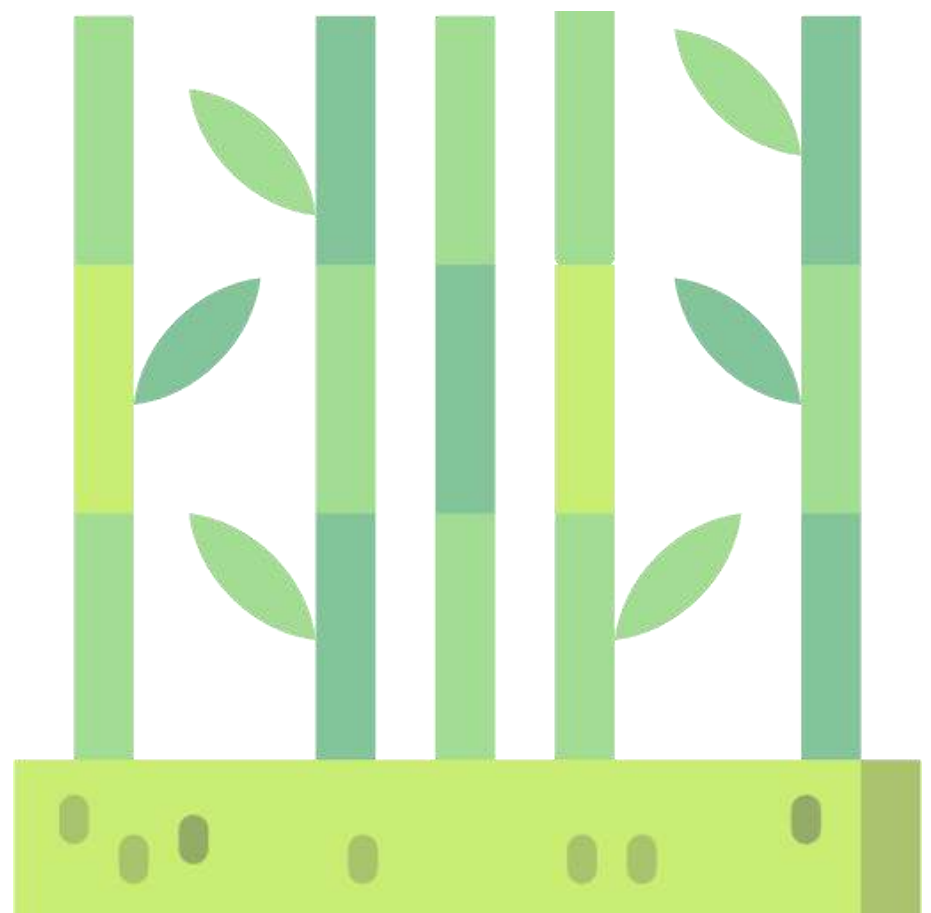
WHERE DO THEY LIVE ?



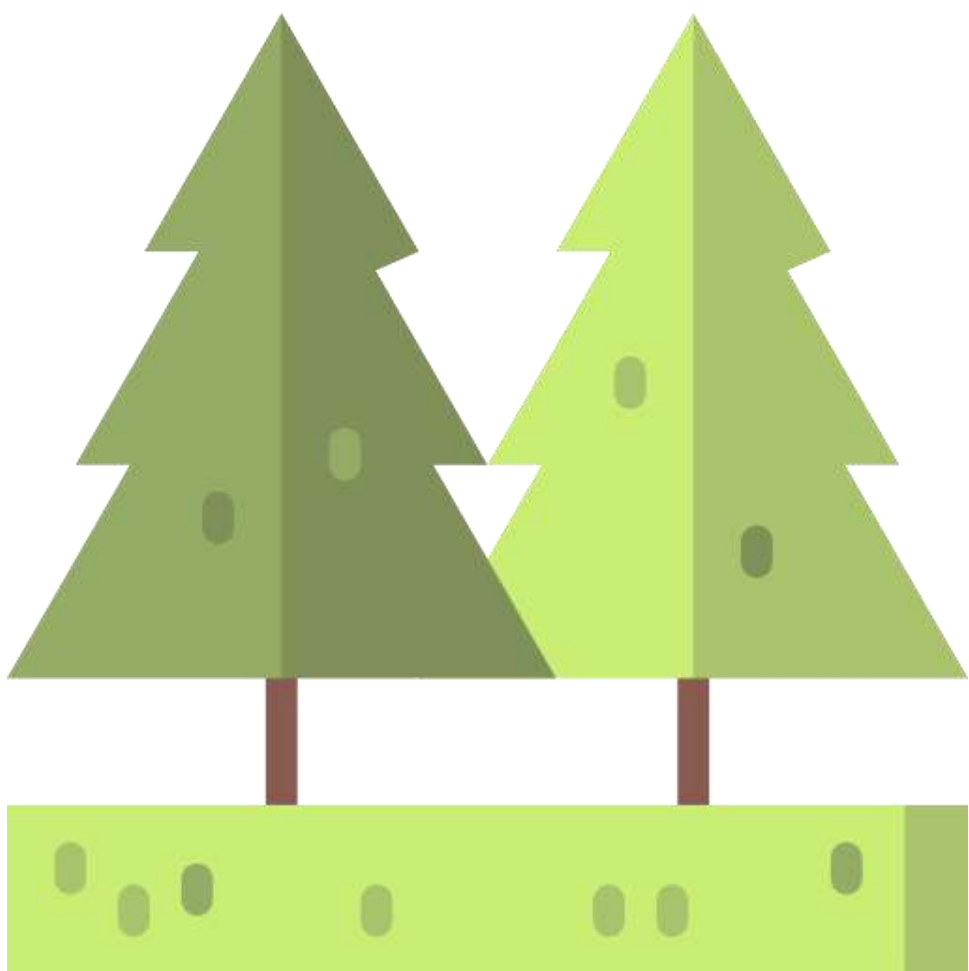
OCEAN



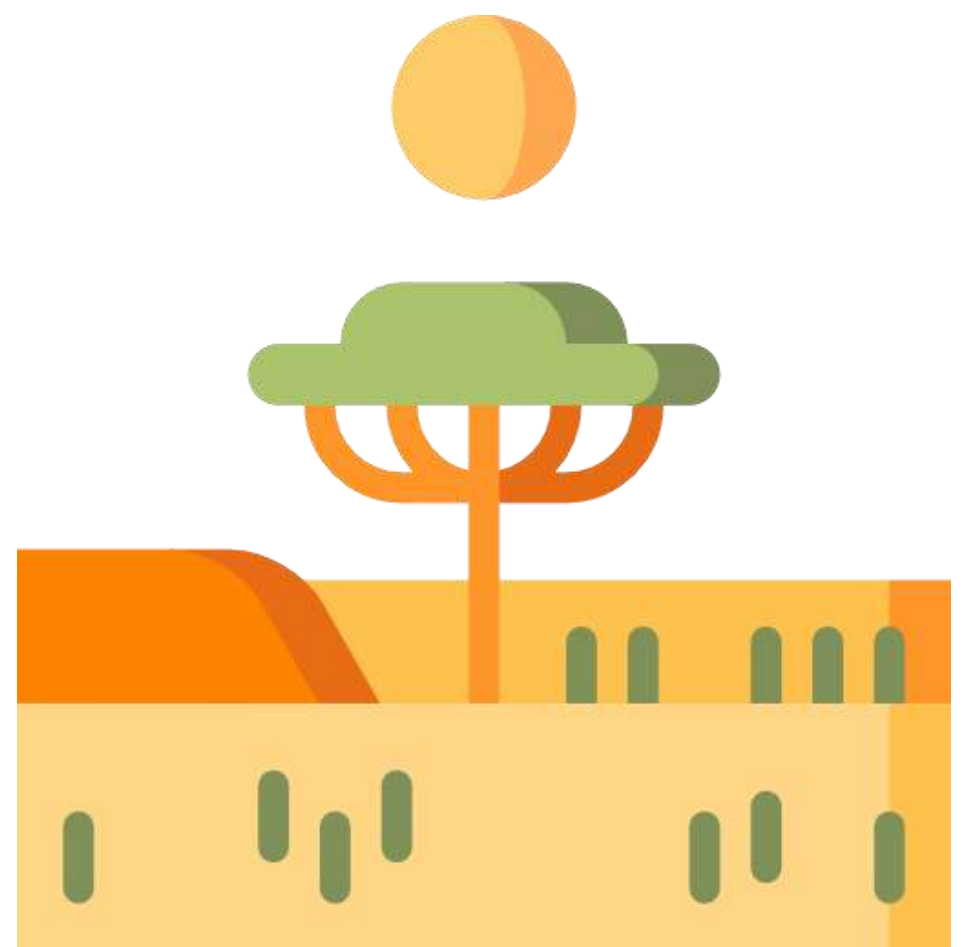
JUNGLE



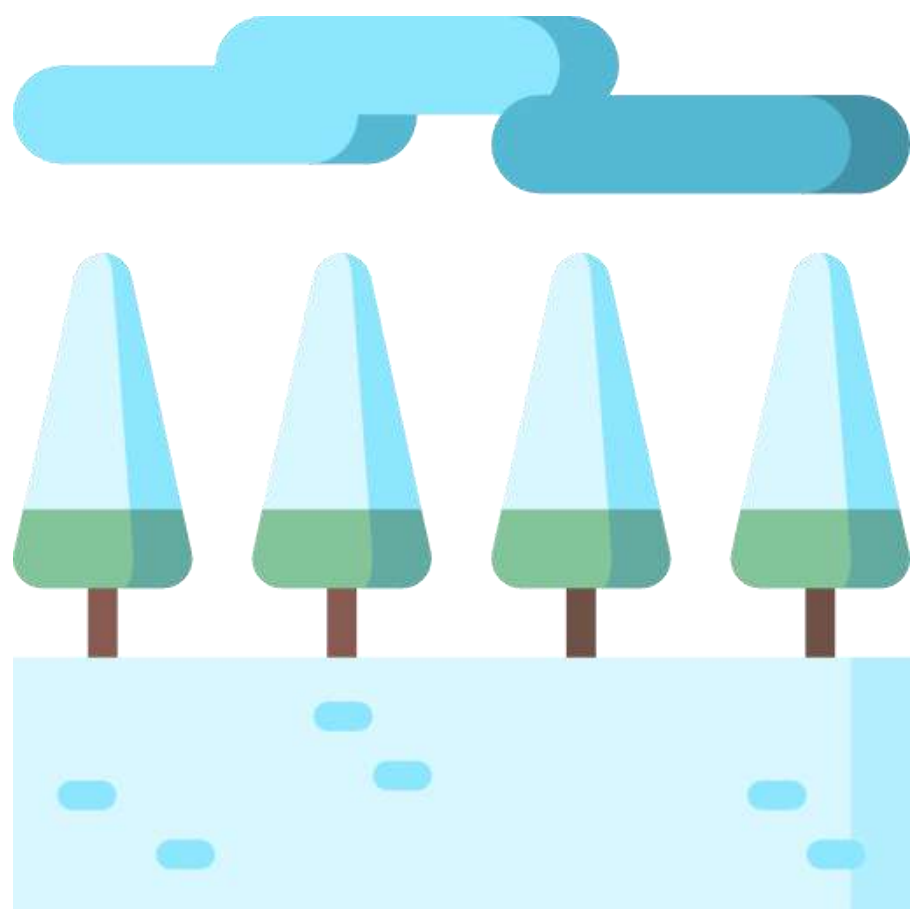
FOREST



SAVANNAH



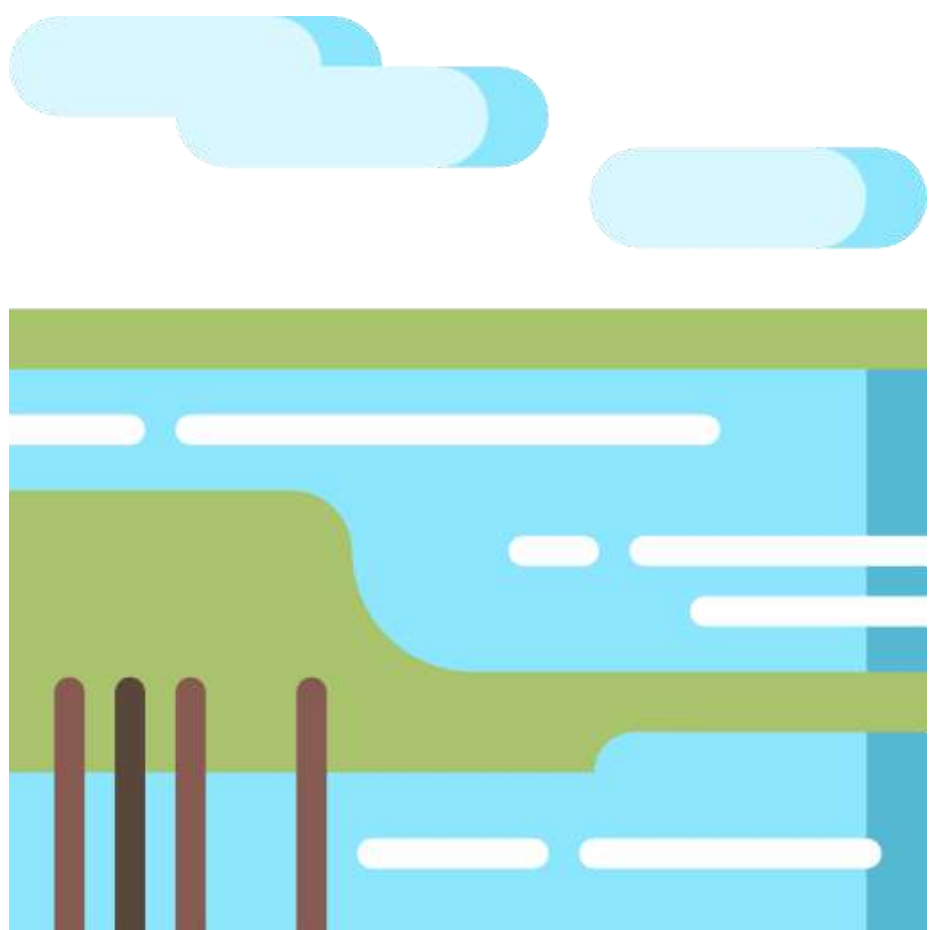
POLAR



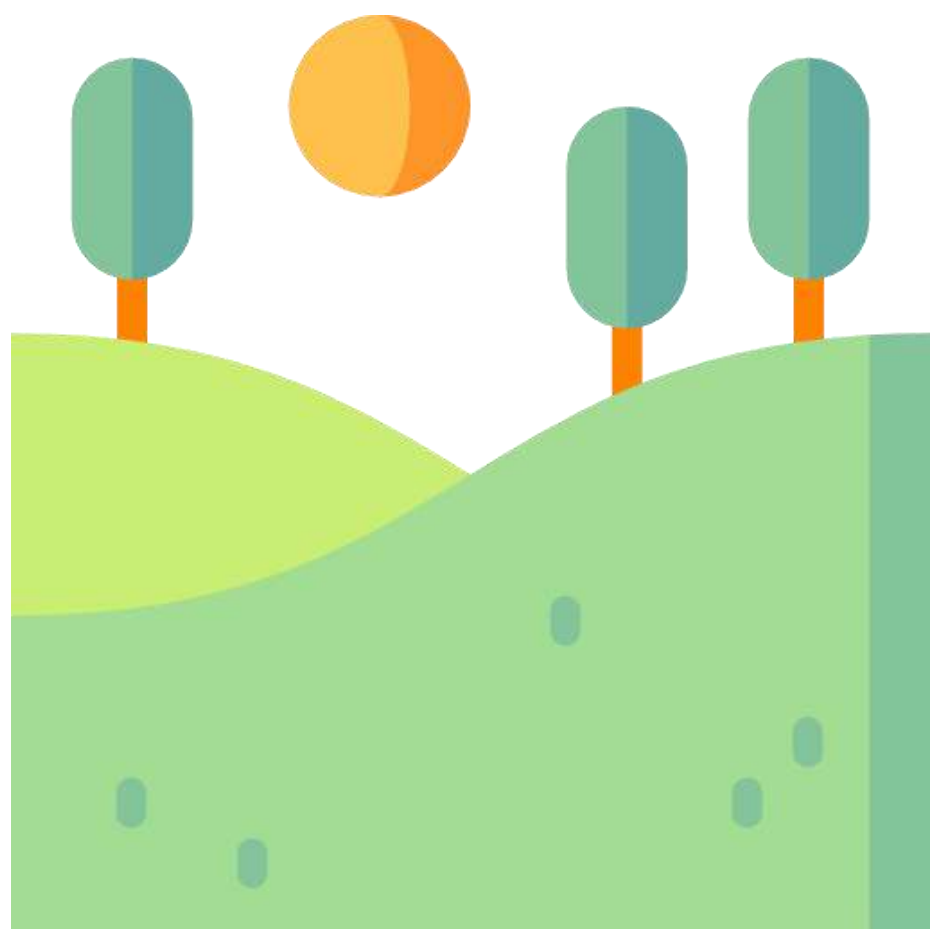
URBAN



WETLANDS



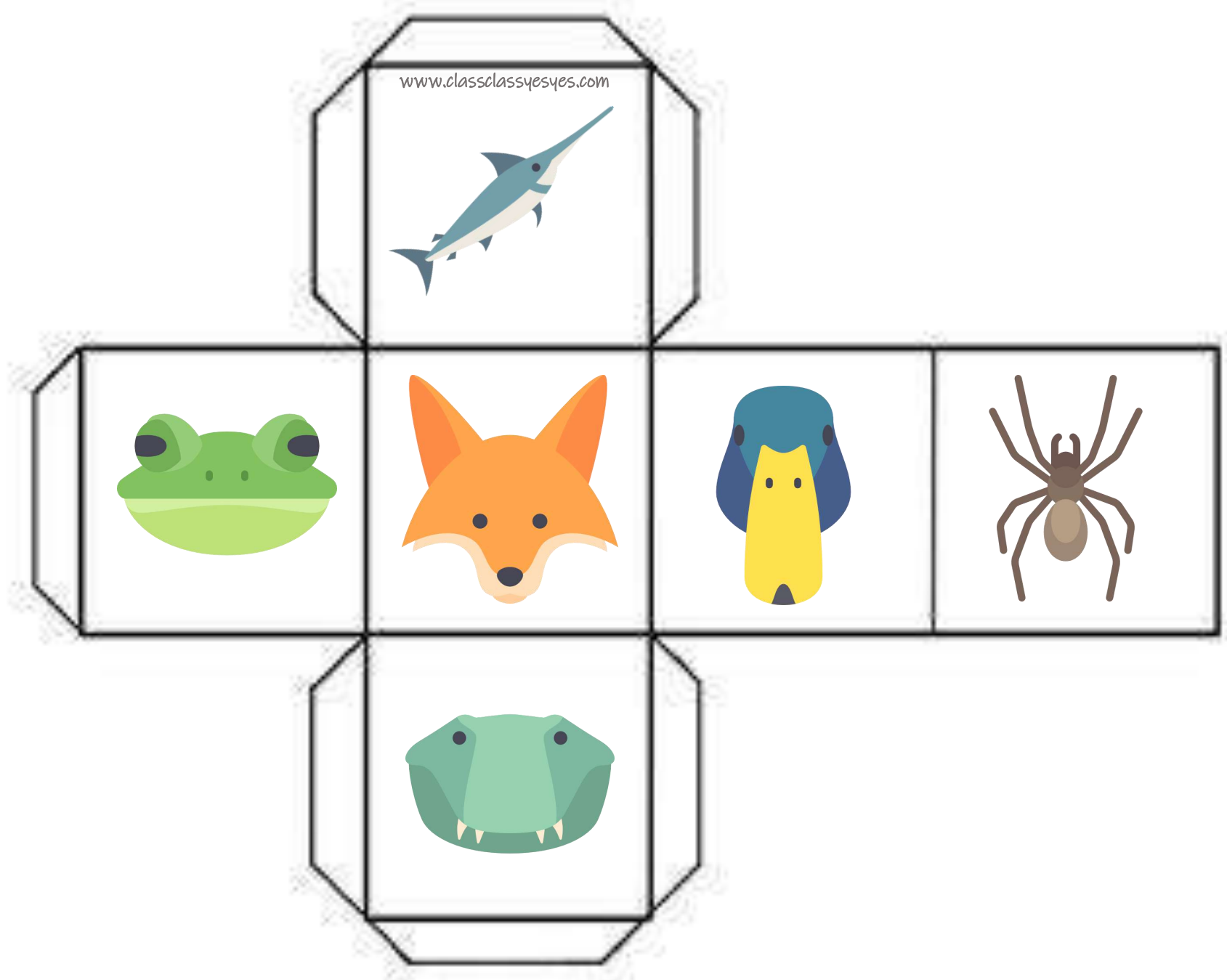
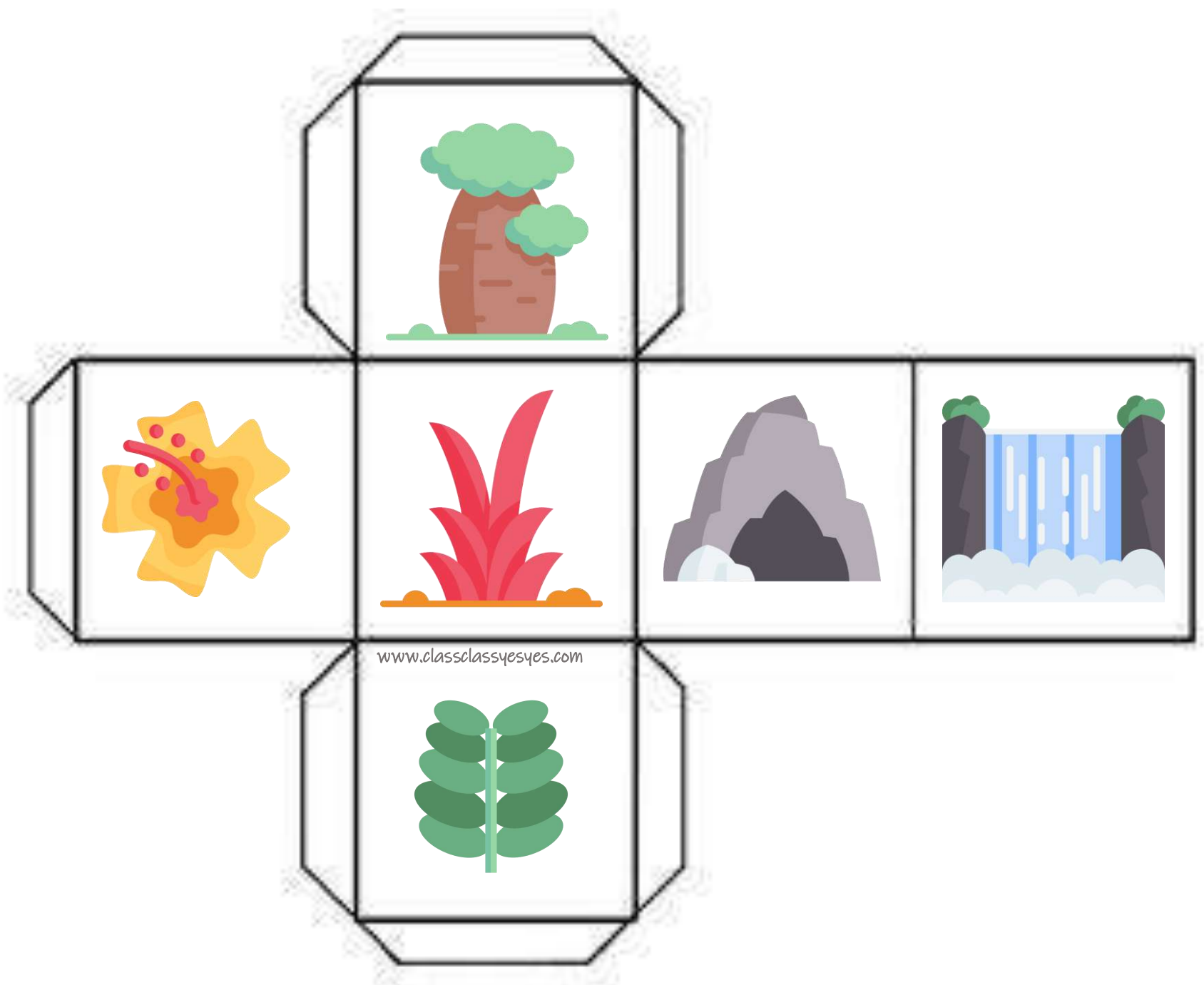
GRASSLANDS

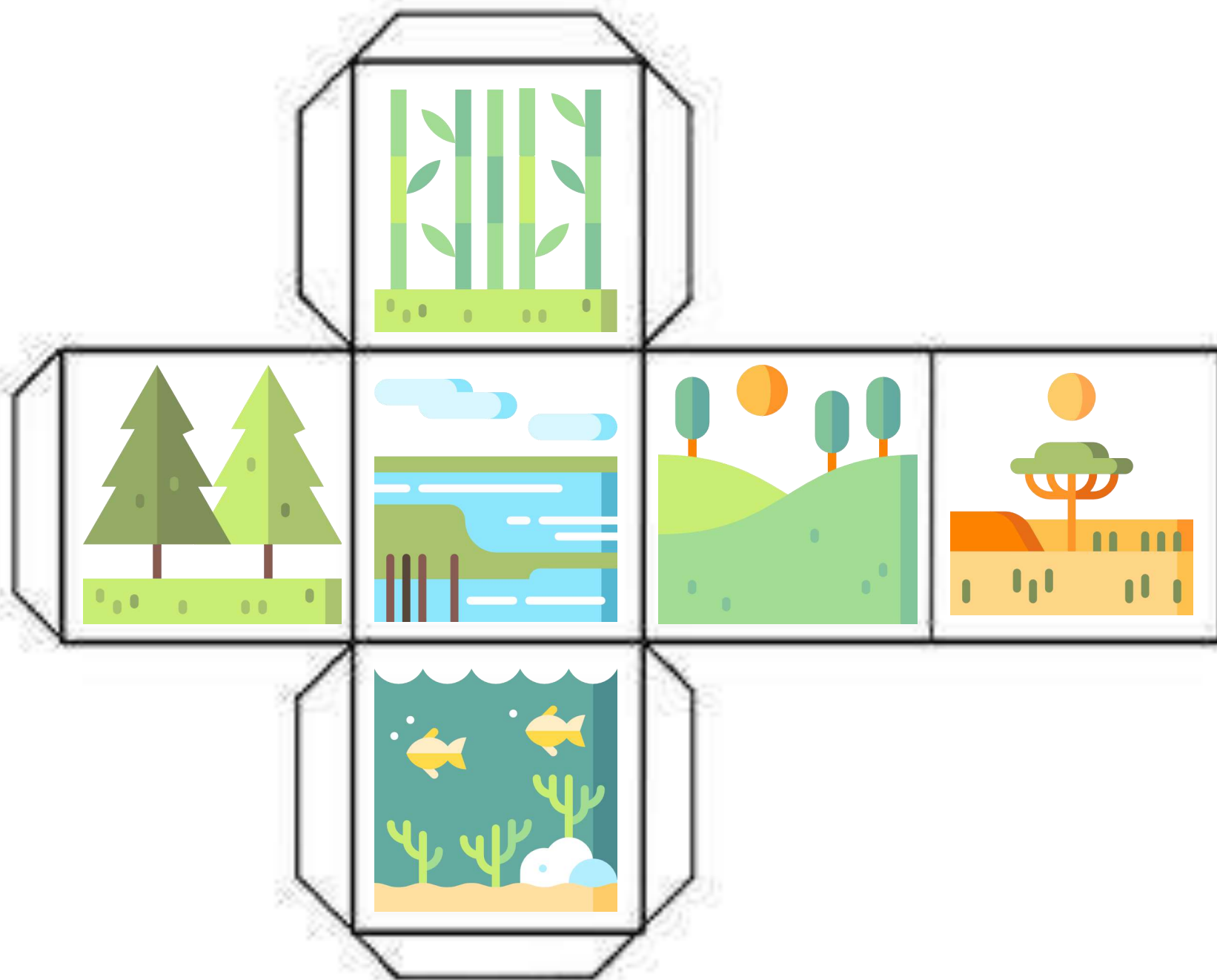
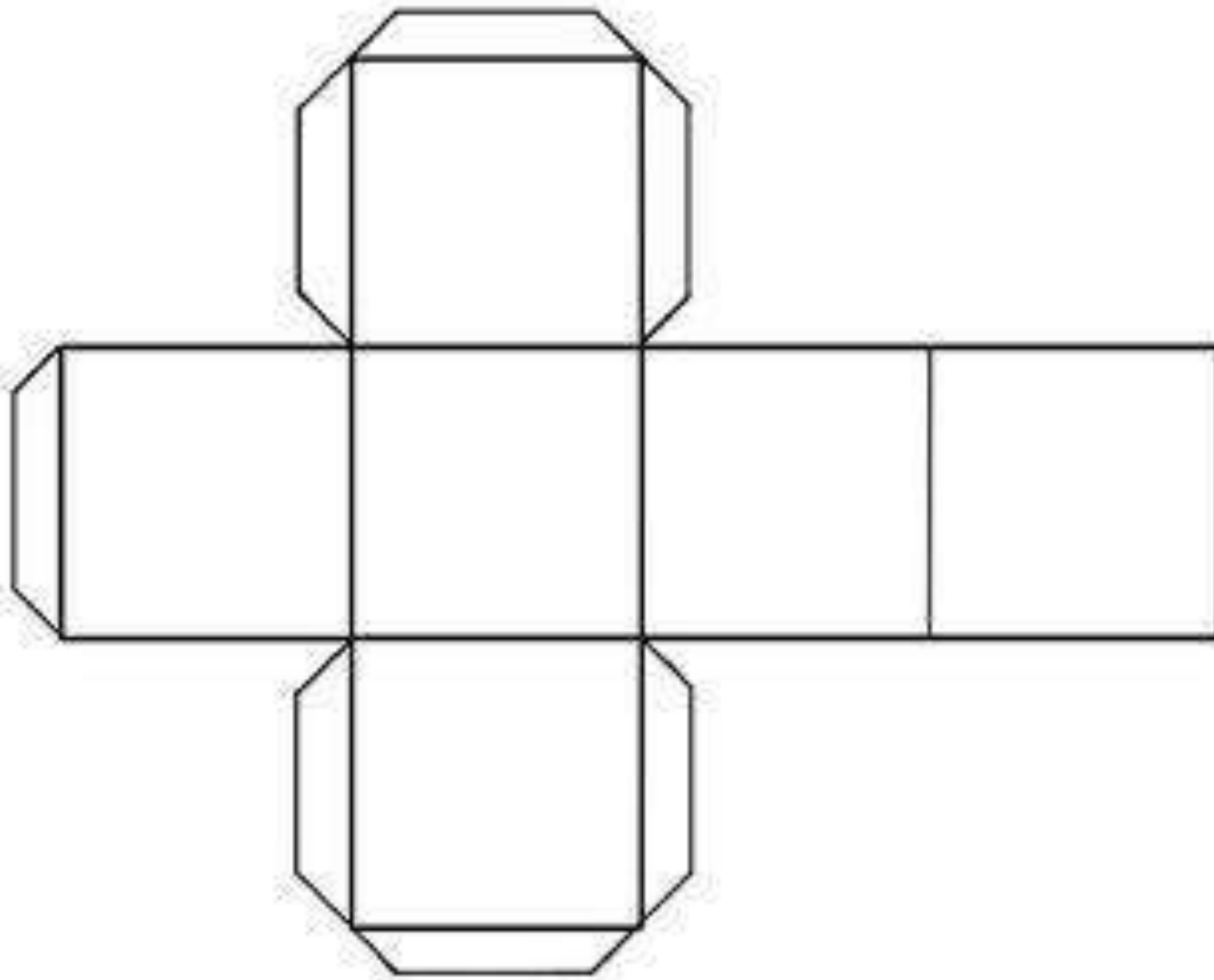


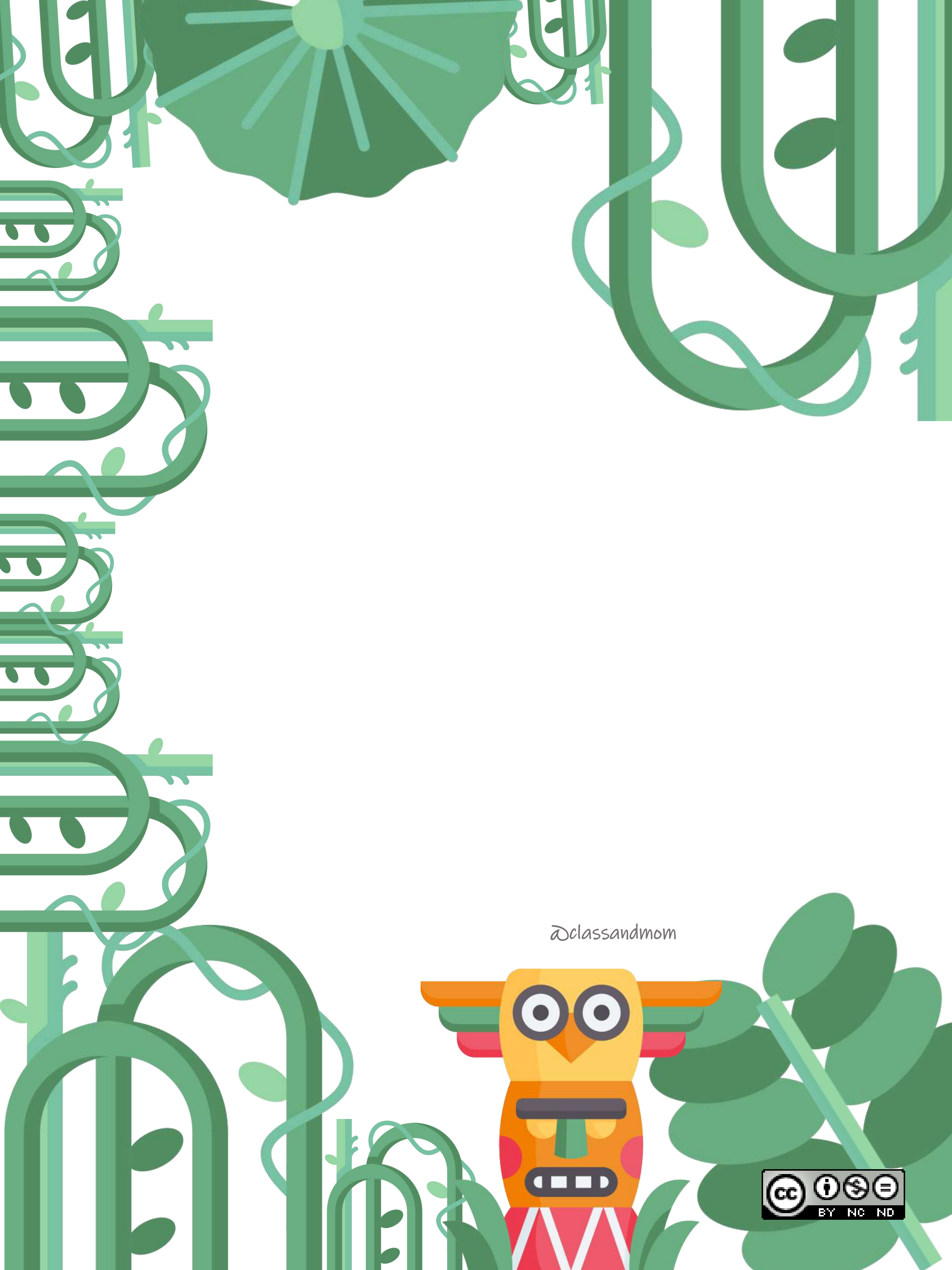
	1	2	3	4	5	6
						
						
						
						
						
						

ROLL AND DESCRIBE









@classandmom

